



Revolution™ CT with Apex Edition

Protecting your investment

Bring the power of the Quantix™ 160 tube and image clarity of TrueFidelity™ CT Images from Deep Learning Image Reconstruction¹ to elevate the capabilities of your Revolution™ CT for every patient.

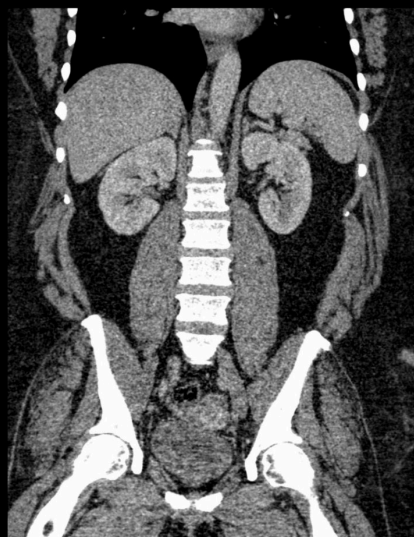


Power and Deep Learning deliver stellar images

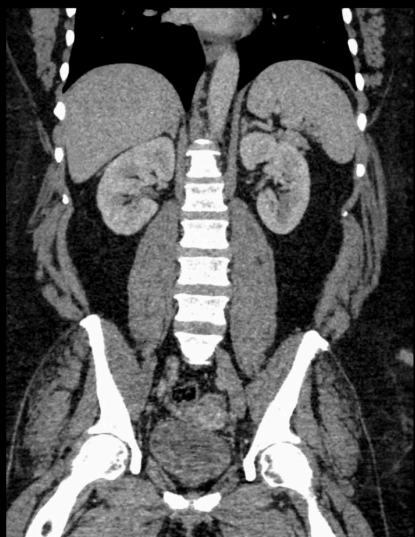
GE's Deep Neural Network compares the CT scanner output to millions of ground truth images, relentlessly refining the algorithm used to create TrueFidelity CT Images complemented by the Quantix 160 tube.

"Excellent CNR, lesion delineation, with improved texture and no plastic appearance in the image,"

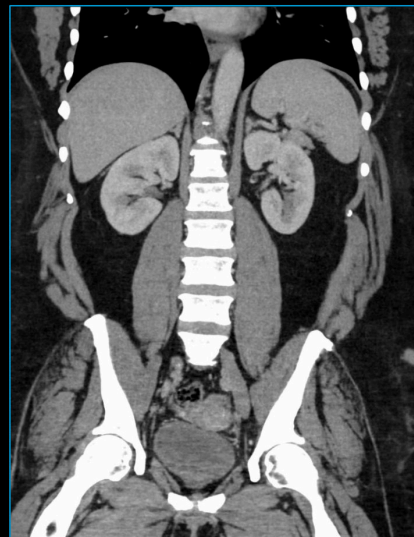
- Naveen Kulkarni, MD Froedtert & the Medical College of Wisconsin.



0.625 mm FBP



0.625 mm ASiR-V 50%



0.625 mm TrueFidelity Image

BMI 62 (400lbs, 1.73m)

¹purchasable option

When Power meets Coverage with Quantix 160 X-ray Tube

Clinicians can take advantage of this unique power and coverage combination to address bariatric patients, achieve low kV imaging and shorter breath-holds.

The power of the newly engineered Quantix 160 Tube is the result of three key technological achievements.

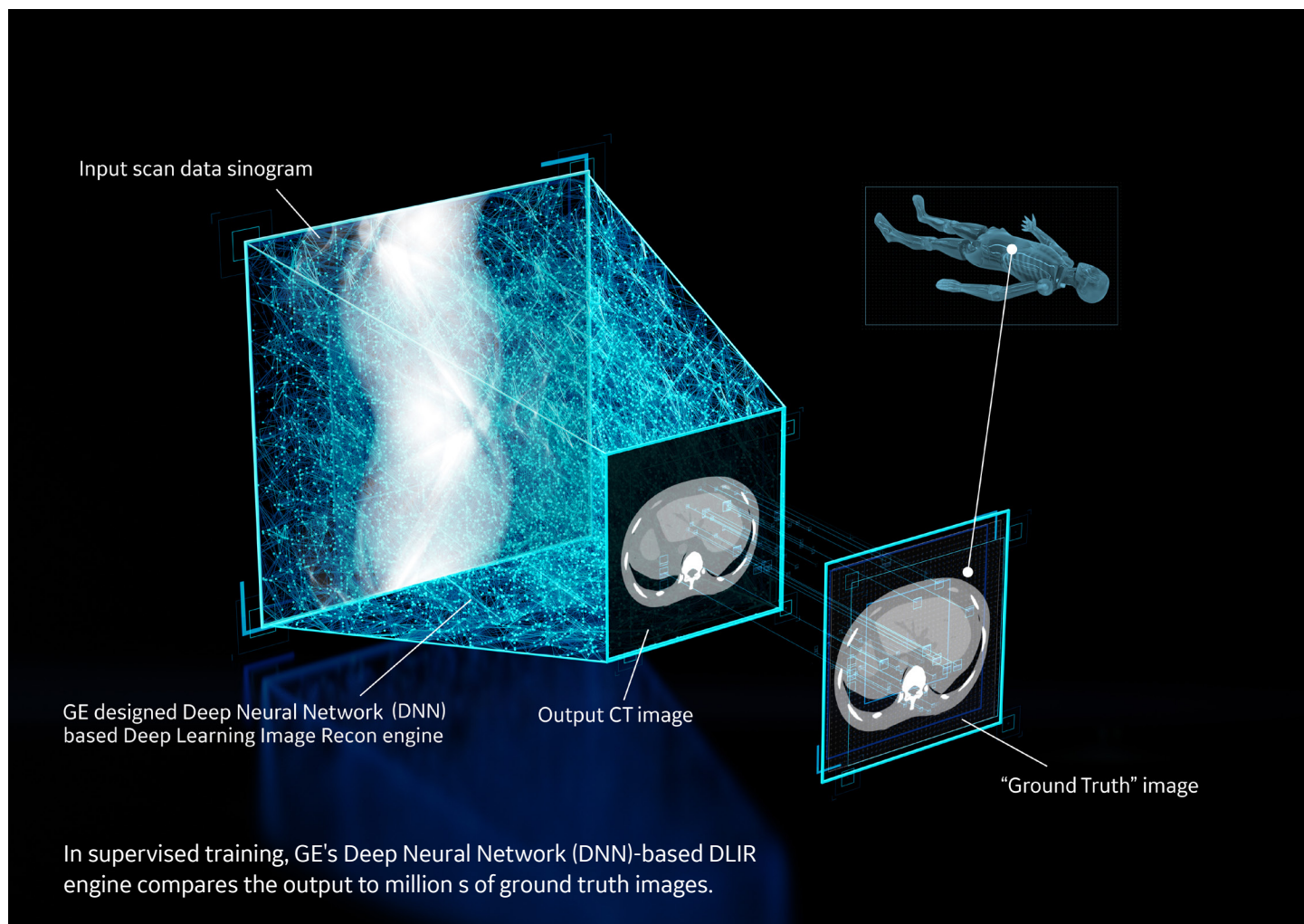
- Liquid metal bearing construction designed to withstand 75 Gs of force
- Flat emitter cathode design
- Wide-view anode

Together, they achieve 1300 mA with 16 cm of coverage, making it the most powerful whole-organ coverage tube in the industry. Revolution CT with Apex Edition provides the resources necessary to improve every clinical outcome.



A futuristic take on classic image reconstruction with TrueFidelity Images

Deep Learning Image Reconstruction (DLIR) promises unparalleled benefits for patients, along with the radiologists and technologists dedicated to their care. GE Healthcare pioneered and consistently pushed the science of image reconstruction further to achieve never-before-possible clarity at low dose. TrueFidelity CT Images are more than a radical, next generation improvement. They elevate the vision of what you and Deep Learning Image Reconstruction can achieve—together.



© 2019 General Electric Company – All rights reserved.

GE Healthcare reserves the right to make changes in specifications and features shown herein, or discontinue the product described at any time without notice or obligation. Contact your GE Healthcare representative for the most current information. GE and the GE Monogram, are trademarks of General Electric Company. GE Healthcare, a division of General Electric Company. GE Medical Systems, Inc., doing business as GE Healthcare.

Not available for sale in all regions.

JB66936XX