

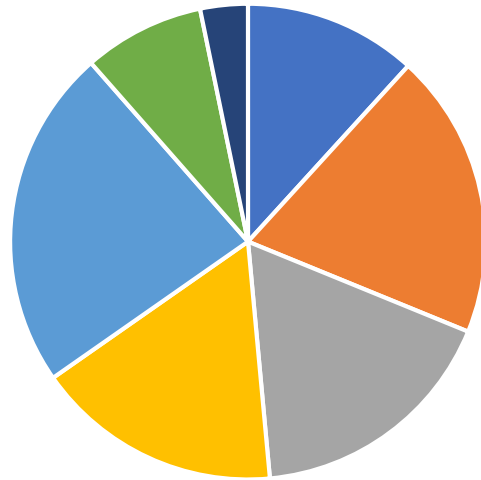
CHOPN - genetika

Asociace BMI a SNP v imunitních genech
u pacientů s CHOPN

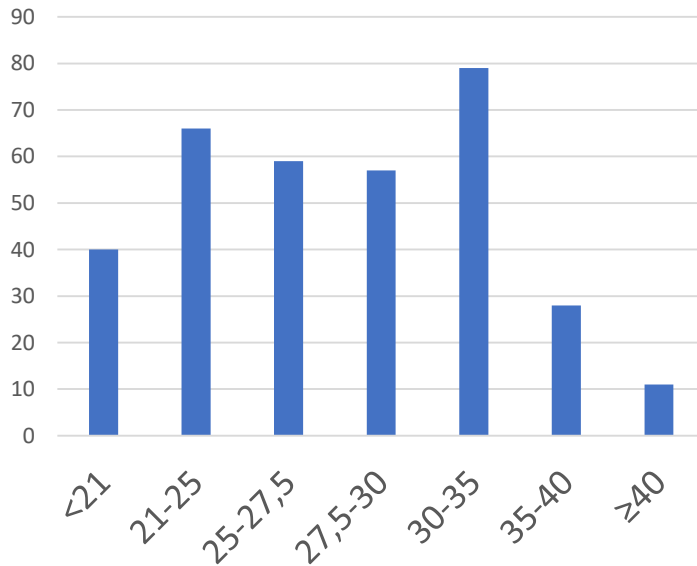
BMI u pacientů s CHOPN

N = 340 (s vyšetřenou genetikou)

Věk:
Medián = 67,0
Průměr = 66,8
SD = 9,3



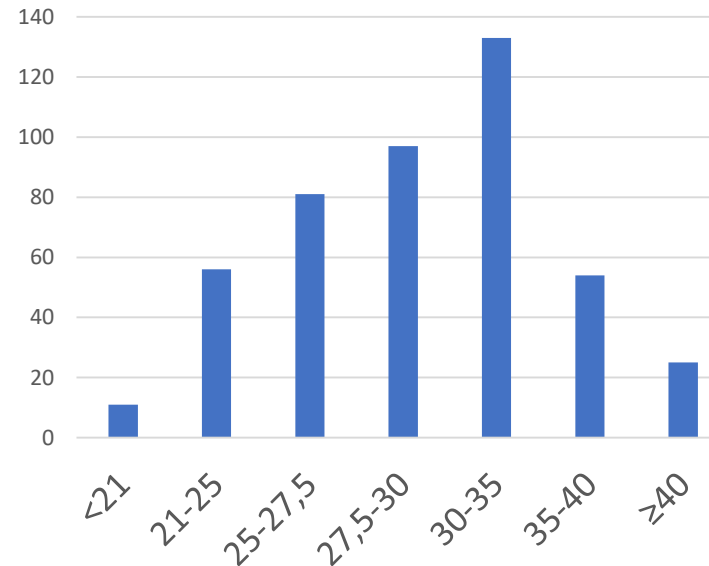
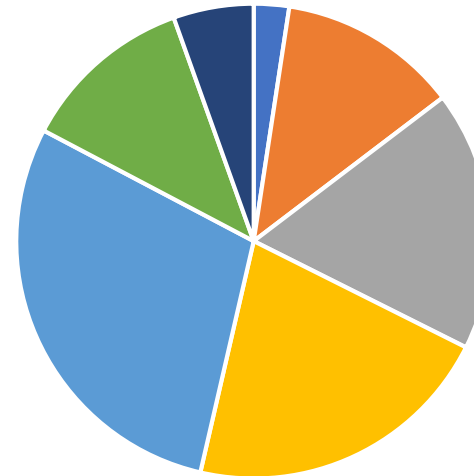
■ <21 ■ 21-25 ■ 25-27,5 ■ 27,5-30 ■ 30-35 ■ 35-40 ■ ≥40



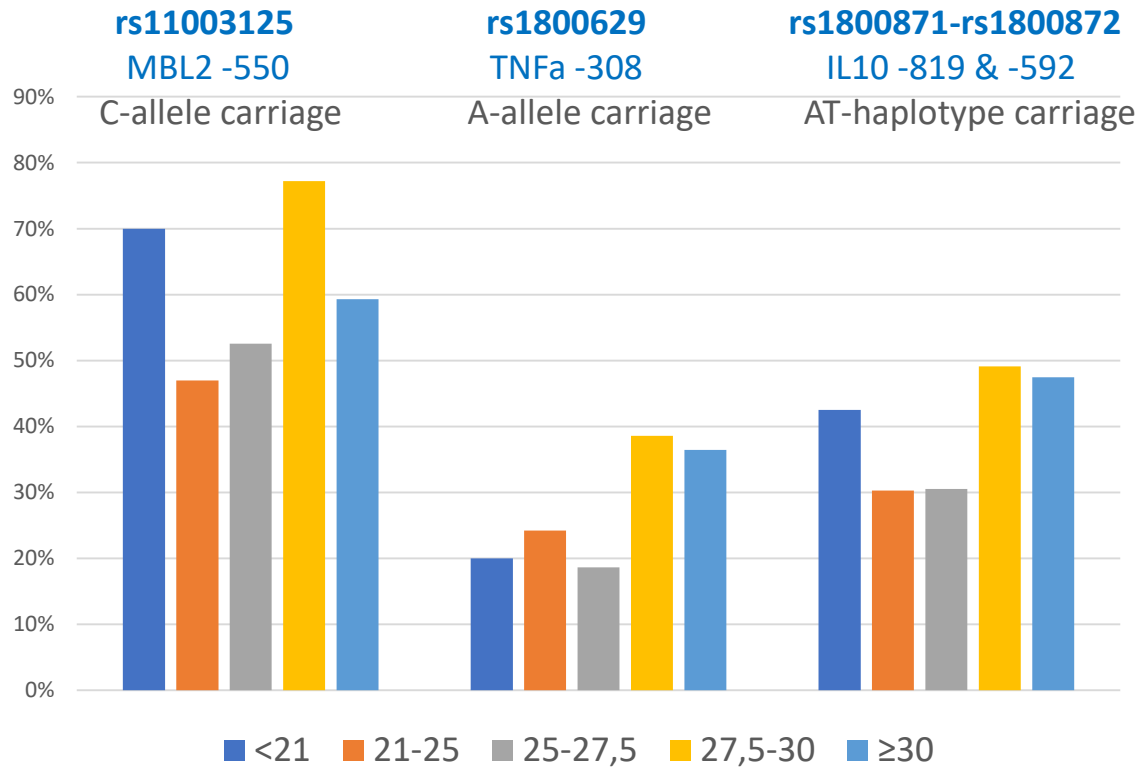
Kontrolní skupina (bez CHOPN)

N = 457

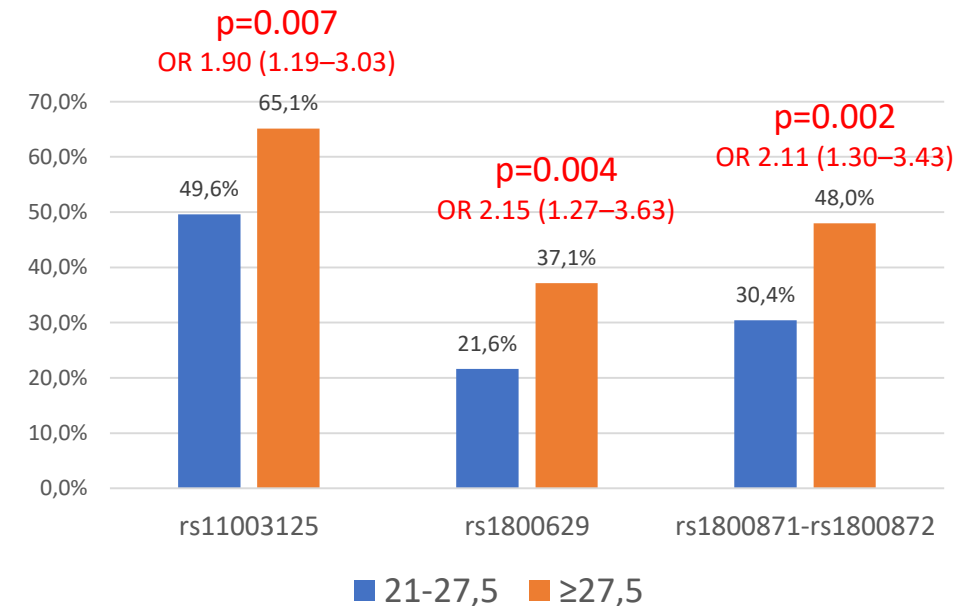
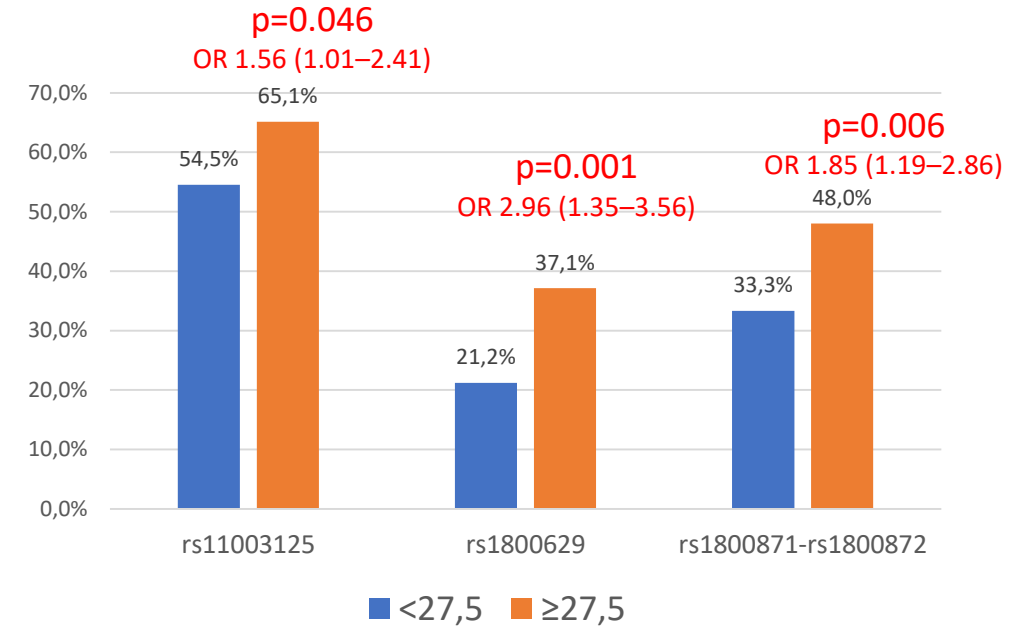
Věk:
Medián = 61,0
Průměr = 62,1
SD = 8,1



Asociace mezi BMI a SNP v genech *TNFA*, *MBL2* a *IL10* u pacientů s CHOPN

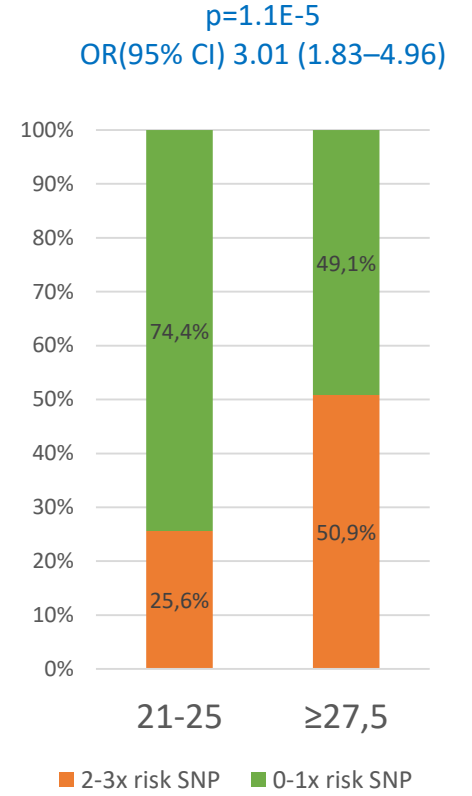
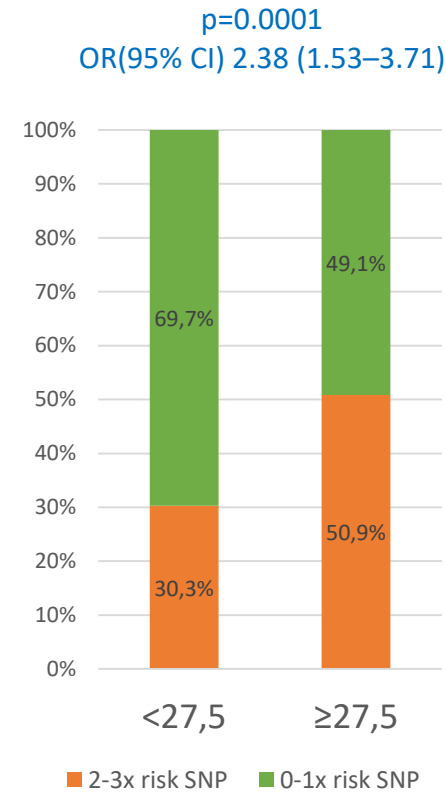
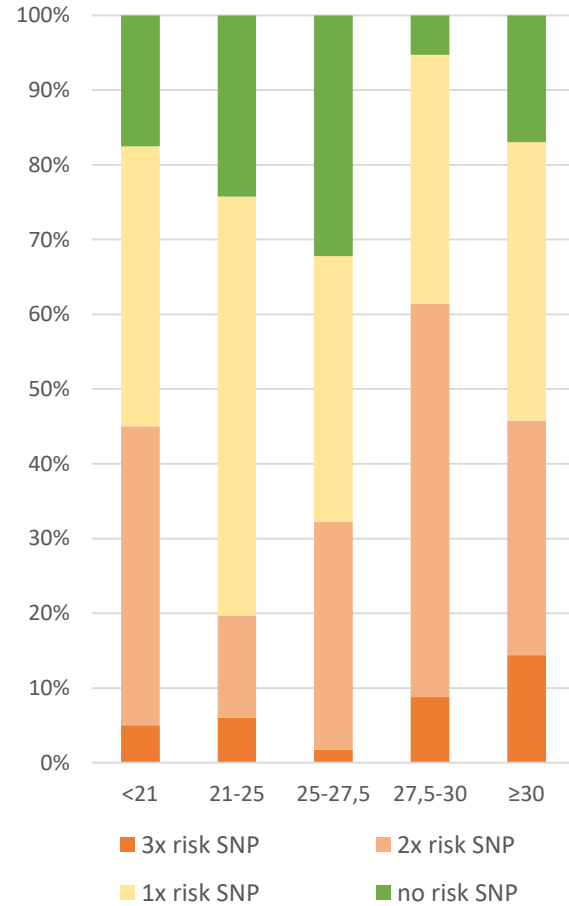
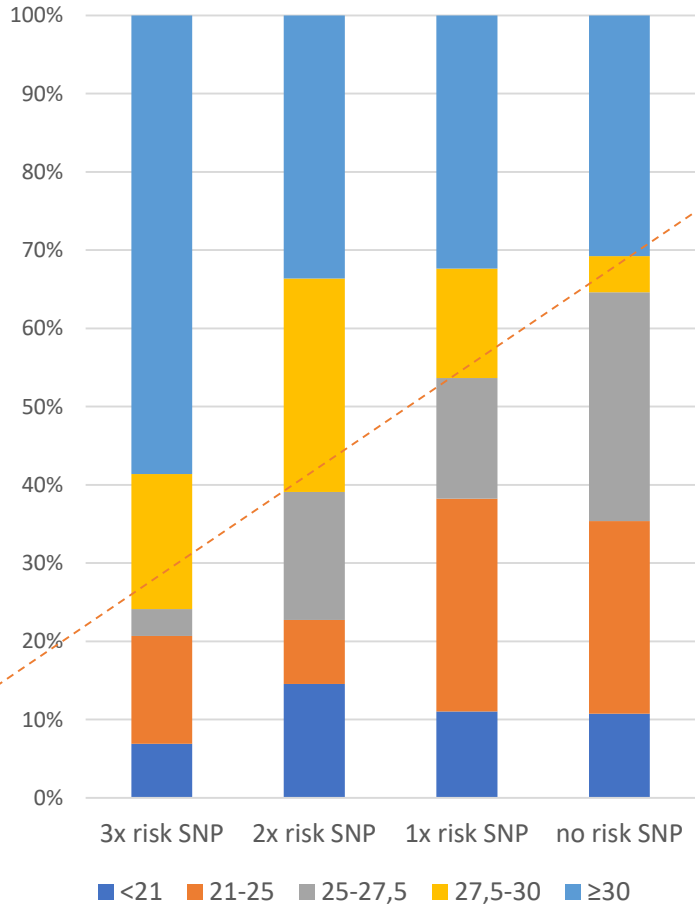


- TNF- α -308, rs1800629, G>A - elevated TNF α blood level in carriers of the minor A-allele
- MBL2 -550, rs11003125 G>C – C=higher serum MBL levels
- IL-10 -592 (rs1800872 T>G) - 3 SNP *IL10* -1082,-819,-592 se dědí společně v haplotypech CGG, TGG, TAT; haplotyp TAT = nižší hladiny IL-10



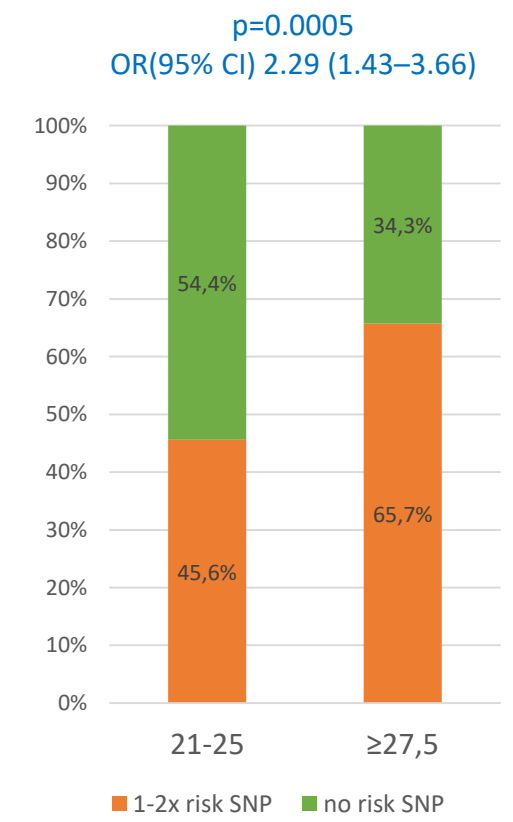
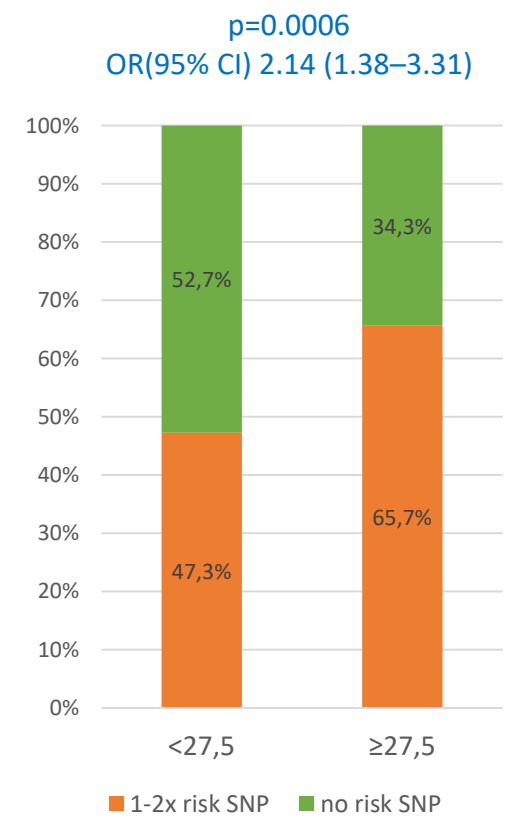
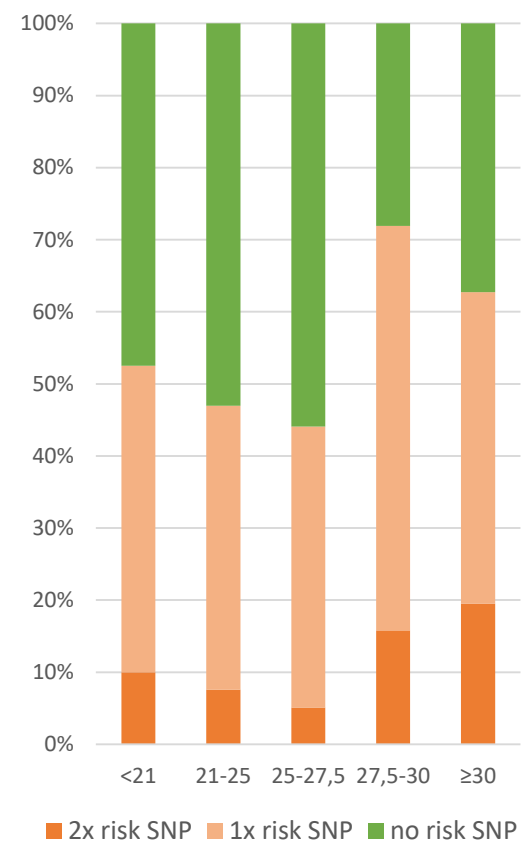
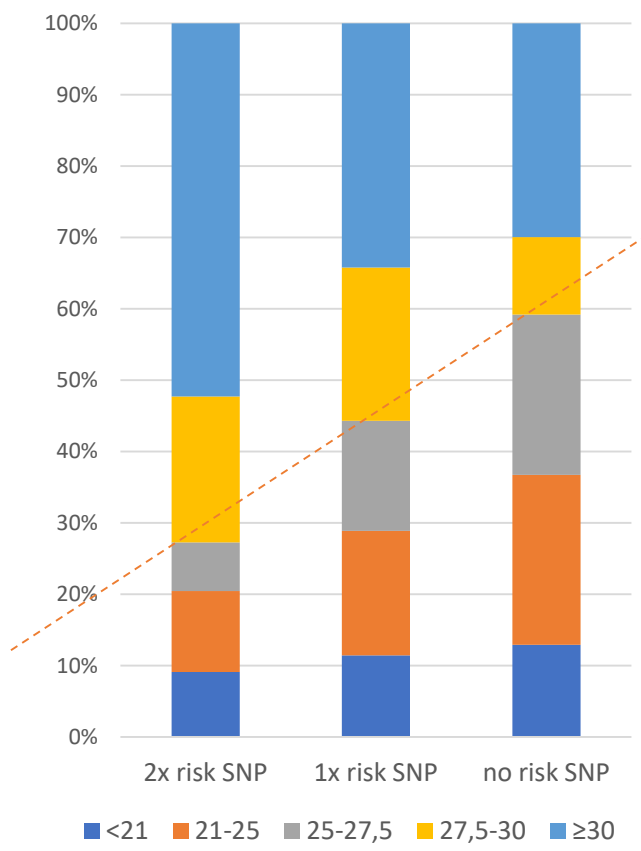
Asociace mezi BMI a SNP u pacientů s CHOPN

Kombinace „rizikových“ genotypů v genech *TNFA*, *MBL2* a *IL10*

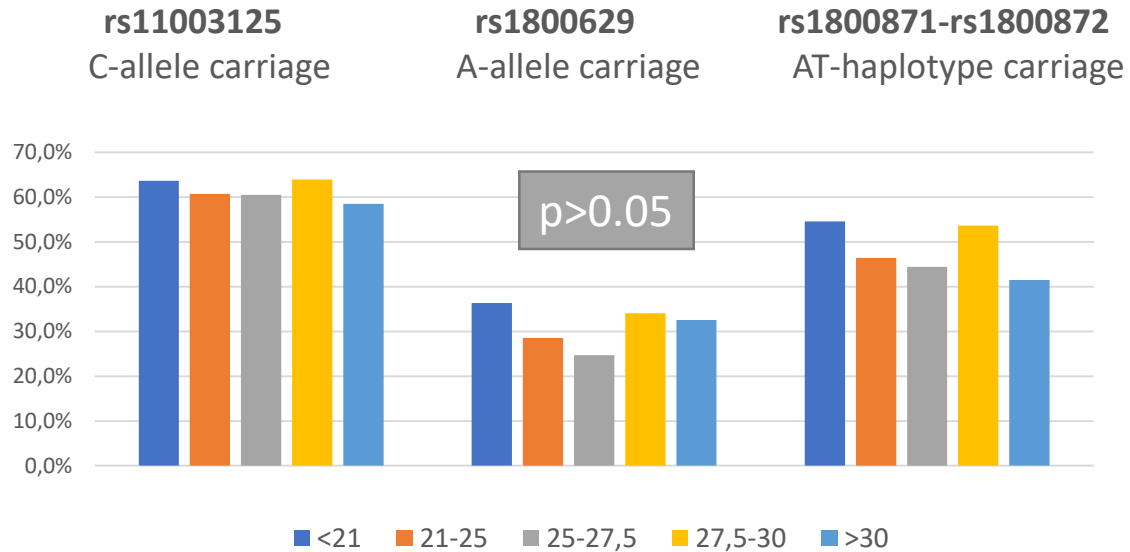


Asociace mezi BMI a SNP u pacientů s CHOPN

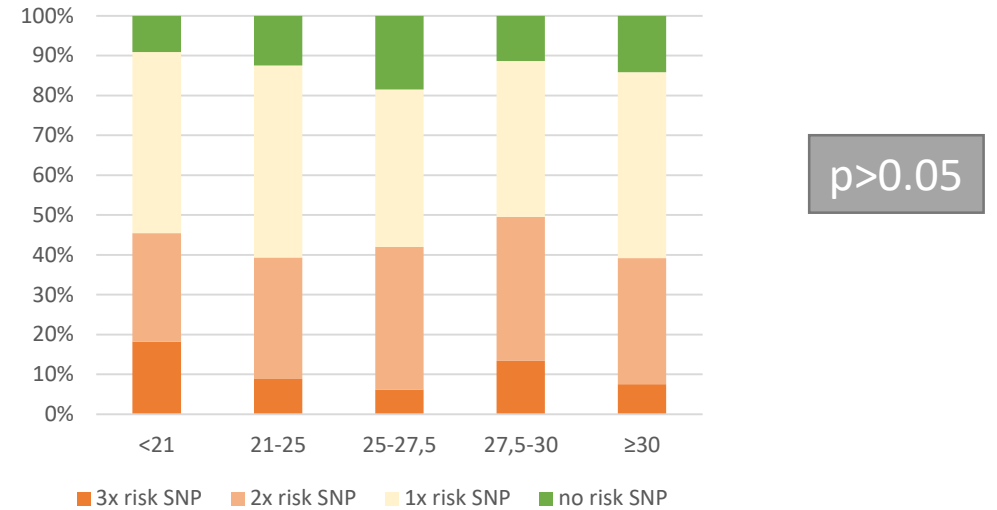
Kombinace „rizikových“ genotypů v genech *TNFA* a *IL10*



BMI a SNP v genech *TNFA*, *MBL2* a *IL10* u kontrolní skupiny

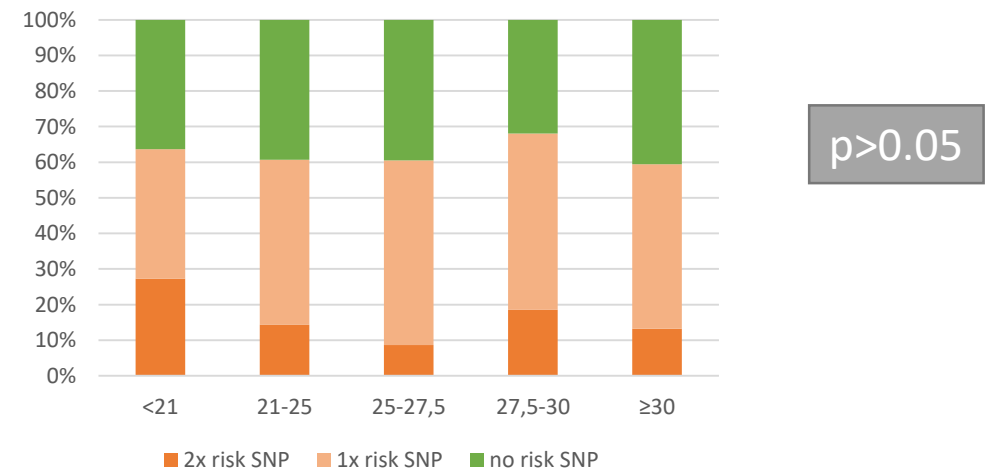


Kombinace „rizikových“ genotypů v genech *TNFA*, *MBL2* a *IL10*



| | | rs11003125 (freq.) | rs1800629 (freq.) | rs1800871-rs1800872 (freq.) |
|--------------------------|-----------|--------------------|-------------------|-----------------------------|
| Kontrolní skupina | BMI <27.5 | 60.3% | 26.7% | 46.6% |
| | BMI ≥27.5 | 60.2% | 33.0% | 45.3% |
| | P-value | 1.000 | 0.175 | 0.759 |
| CHOPN | BMI <27.5 | 54.5% | 21.2% | 33.3% |
| | BMI ≥27.5 | 65.1% | 37.1% | 48.0% |
| | P-value | 0.046 | 0.001 | 0.006 |

Kombinace „rizikových“ genotypů v genech *TNFA* a *IL10*



Asociace kachexie a rs361525 (TNFa -238)

Nosičství alely rs361525*A je častější u pacientů s kachexií

