



## Release Notes: Cascade v2.6 Sp1

### What's New?

#### Surgeon-controlled SmartProbe



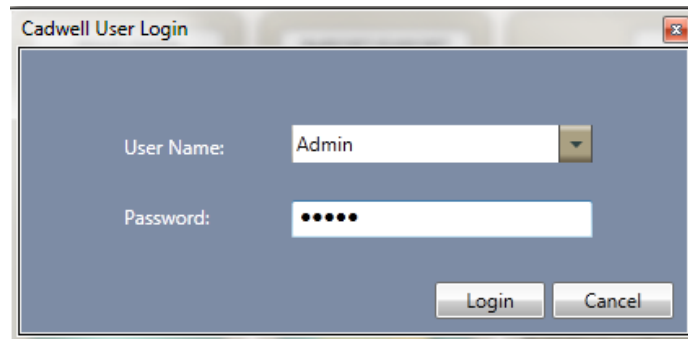
*Note at the time of v2.6 SP1 software release the Cadwell SmartProbe was still completing the FDA 510K approval process. It will be available to the public once this is complete.*

Cadwell Cascade continues its march across the operating suite. In v2.6 we offered Dual View®, a second monitor placed next to the operating field displaying an innovative screen to provide you with the tools to provide real-time visual and audio feedback to your surgical team during lateral approach cases. In v2.6 SP1 we enable you to engage your surgical team directly in the operating field with SmartProbe™ a sterile hand-held disposable probe handle that contains red, green, and yellow LED lights enabling you to offer your surgeon direct visual feedback from our Dual View® software module without moving his/her gaze from the surgical field.



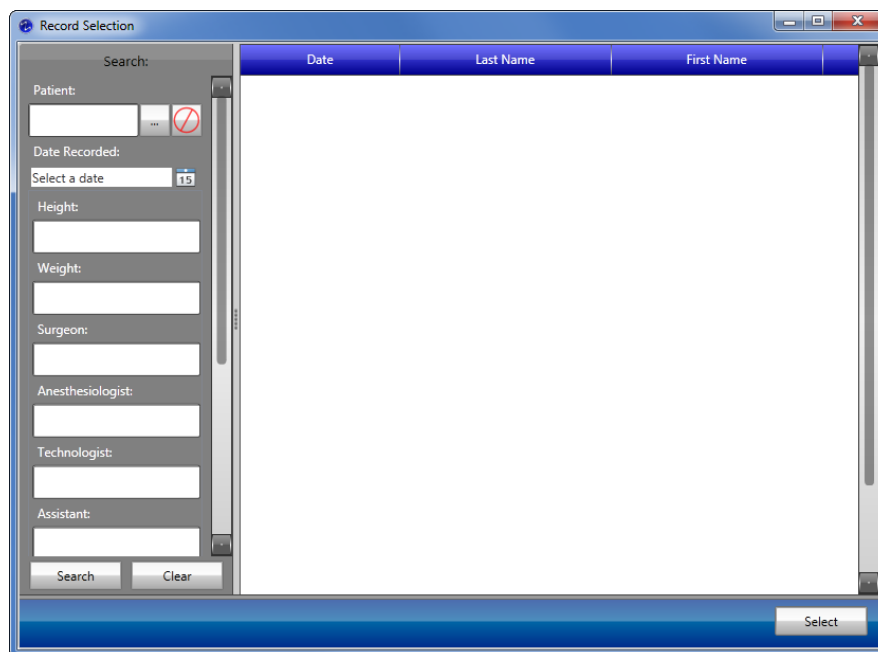
## Login screen has been removed

Cascade 2.6 SP1 no longer requires users to log in upon launching the program as it did in the first release of v2.6.



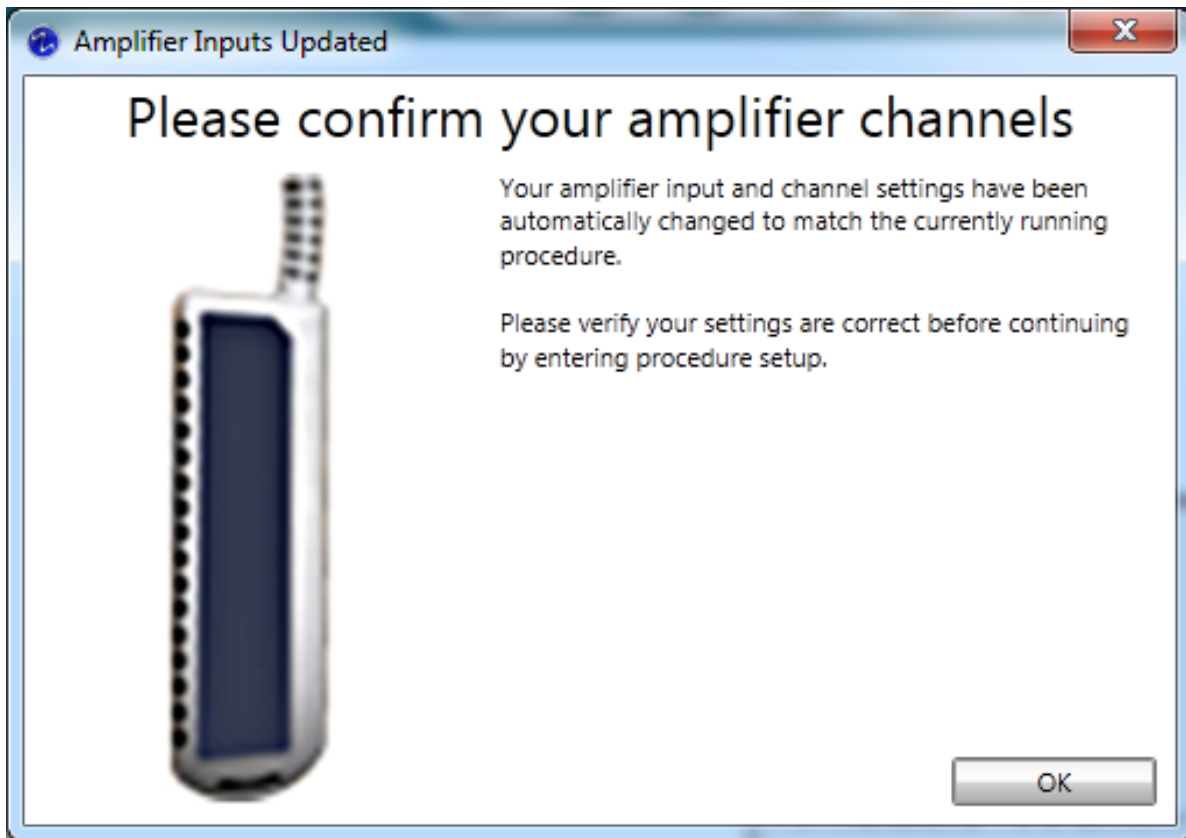
## Delete Records/Patients from local database

Users can now easily select and delete one or multiple records from the DM local database enabling you to remove patient information from your local hard drive.



## Global Amplifier Inputs

Amplifier inputs set in the traditional Cascade Procedure Setup are now automatically transferred into the Dual View® portion of the Cascade program; reducing confusion and user-error; and eliminating the task of recreating your amplifier inputs in two separate portions of the program.



## Cascade v2.6 minimum computer requirements:

The computer used to run the Cadwell Cascade, Elite, or PRO is an integral part of your Cascade system. For optimum performance of the system, use a computer that meets the following criteria: Windows 8 is not supported.

	Minimum	Recommended
Operating System	<b>32-bit</b> Windows 7 Professional <b>64-bit</b> Windows 7 Professional	
Processor	Intel i7 processor or comparable	
Hard Disk Drive	80 Gigabytes Capacity, 5 GB free-space	40 GB free space
Memory (RAM)	4 GB	
Archive Device	Any Windows supported device	
Graphics	1024 x 768 resolution; 16 MB, 32-bit color depth ( <i>supported</i> , but not recommended) Screen Resolutions higher than 1600x900 may cause settings information to be cut off in windows with a fixed size.	1600 x 900 Max; 64 MB ATI Graphics
Base Unit Communication	10 Base-T Ethernet connection	
Network Connectivity	Second Ethernet connection (e.g., Ethernet card) required for simultaneous connection to base unit and a network	
Regulatory Requirements	U.S. and Canada: Equipment must meet UL1950 or IEC950 European Union: Equipment must meet EN60950	

## Cascade v2.6 system firmware requirements:

Hardware Type	Cascade Version	Base Version	Junction Board SW	Estim Board SW
<b>16-Channel Cascade</b>	2.6	3.27	2.2	5.8 or 5.9
<b>32-Channel Cascade Elite</b>	2.6	3.86	2.2	5.9 If ES-IX, v0.11
<b>Cascade PRO (16 or 32)</b>	2.6	1.09	2.2	ES-IX, v0.11

## Installation/-Uninstall Instructions

See Document 369028-934 for Cascade 2.6 software installation instructions found in the **2.6 Files\Documents** folder on the installation DVD.

## Known Issues (Errata)

- Recording then deleting all LA channels from one side results in trace line artifacts from when there were channels configured
- Computer Name and IP address not displayed on the main menu window.
- Import record feature fails if \*.smd file is located on a CD.
- Cannot open \*.smd file on the network by double clicking on the filename.
- Cascade sometimes displays ES-IX error messages during electrocautery use.
- Play sound on stim does not work for “Single” trigger stimulation. This feature works as intended for other modes of stimulation.
- CascadeIP.exe must be run twice on Windows 7 PCs. The first instance will produce an error, but the second run will work.
- Traces displayed in trace windows (including summary windows) are based on mode channel order, not amp channel number. When channels are added or deleted from a mode, previously stored data remain in their previous location on the display window. Thus, channel labels are for data recorded from the current channel configuration, not from previous channel configurations.
- On rare occasions, TOF may stimulate a fifth pulse after four full sweeps are recorded. No data is recorded from the fifth pulse.

## FAQs

***If I have an older PC with a single core processor, should I try installing 2.6?***

No, installing 2.6 on a single-core processor will slow-down the application dramatically.